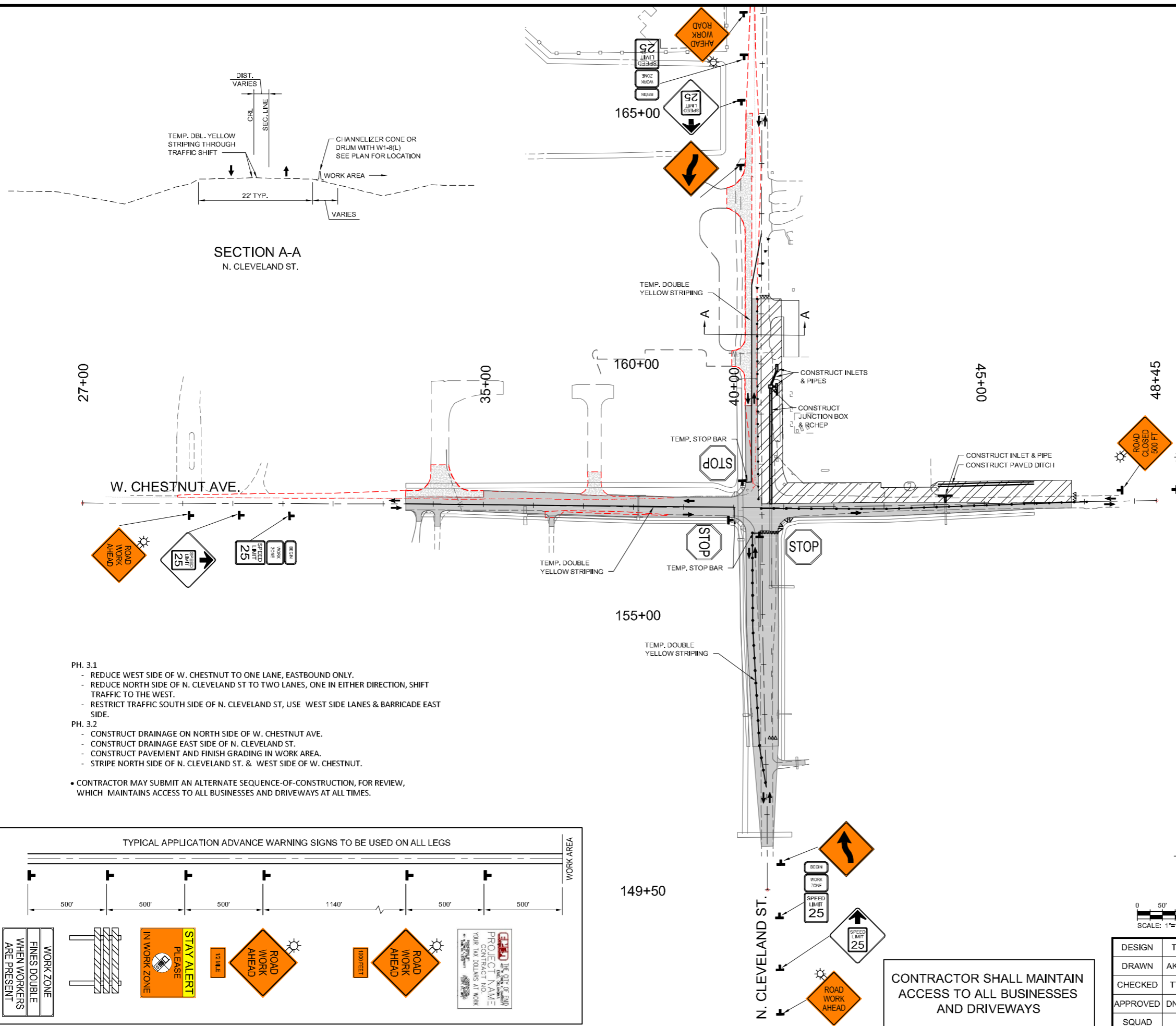


OKLAHOMA DEPARTMENT OF TRANSPORTATION					
FED. ROAD DIST. NO.	STATE	STATE JOB NO.	FISCAL YEAR	SHEET NO.	TOTAL SHEETS
4	OKLA	17020(05)		25	
DESCRIPTION			REVISIONS	DATE	



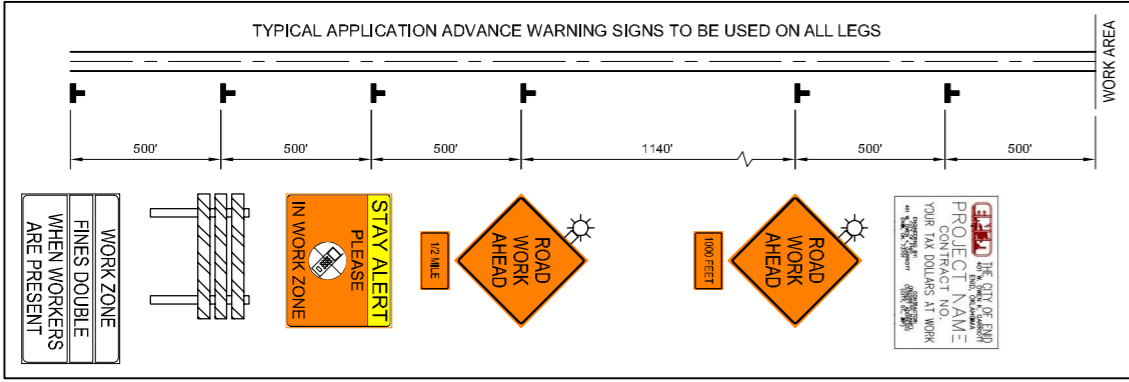
SECTION A-A
N. CLEVELAND ST.

- NOTES:**
- REMOVE PERMANENT PAVEMENT MARKINGS OR TEMPORARY PAVEMENT MARKINGS FROM PREVIOUS PHASES THROUGH TRAFFIC PATTERN SHIFT AREAS THAT CONFLICT WITH THE PROPOSED PHASE PAVEMENT MARKINGS.
 - REFERENCE ODOT TRAFFIC CONTROL STANDARDS TCS1-1, TCS2-1, TCS3-1, TCS4-1, TCS5-1, TCS6-1, AND ROADWAY DESIGN STANDARD PDT-1.
 - WHERE WORK OCCURS IN CLOSE PROXIMITY TO TRAFFIC, UTILIZE THE 2009 MUTCD FIG. 6H-10 FOR "LANE CLOSURE ON A TWO-LANE ROAD USING FLAGGERS (TA-10)" DURING OFF-PEAK DAYLIGHT HOURS AS NEEDED.
 - CONTRACTOR TO COORDINATE WITH CITY FOR ANY TRAFFIC SIGNAL CONTROL ADJUSTMENTS NEEDED DUE TO TEMPORARY TRAFFIC SHIFTS THROUGH INTERSECTION.
 - SEE ODOT TRAFFIC CONTROL STANDARD TCS21-1 FOR CONSTRUCTION ZONE PAVEMENT MARKING.
 - CONSTRUCT ALL PROPOSED DRAINAGE STRUCTURES WITHIN THE WORK AREAS UNLESS NOTED OTHERWISE.
 - USE PORTABLE LONGITUDINAL BARRIER AS NEEDED WHEN CONSTRUCTING DRAINAGE CROSSING STRUCTURES WITH APPROPRIATE FLARES TO PLACE ENDS OUT OF THE CLEAR ZONE. (SEE ODOT STDS. TCS2-1, TCS24-1, AND TCS25-1.) THE PRICE BID FOR LONGITUDINAL BARRIERS TO BE INCLUDED IN OTHER ITEMS.
 - MAINTAIN STREET ACCESS TO BOTH SOUTH AND WEST SIDES OF THE GAS STATION AT ALL TIMES.

- PH. 3.1**
- REDUCE WEST SIDE OF W. CHESTNUT TO ONE LANE, EASTBOUND ONLY.
 - REDUCE NORTH SIDE OF N. CLEVELAND ST TO TWO LANES, ONE IN EITHER DIRECTION, SHIFT TRAFFIC TO THE WEST.
 - RESTRICT TRAFFIC SOUTH SIDE OF N. CLEVELAND ST, USE WEST SIDE LANES & BARRICADE EAST SIDE.
- PH. 3.2**
- CONSTRUCT DRAINAGE ON NORTH SIDE OF W. CHESTNUT AVE.
 - CONSTRUCT DRAINAGE EAST SIDE OF N. CLEVELAND ST.
 - CONSTRUCT PAVEMENT AND FINISH GRADING IN WORK AREA.
 - STRIPE NORTH SIDE OF N. CLEVELAND ST. & WEST SIDE OF W. CHESTNUT.
- CONTRACTOR MAY SUBMIT AN ALTERNATE SEQUENCE-OF-CONSTRUCTION, FOR REVIEW, WHICH MAINTAINS ACCESS TO ALL BUSINESSES AND DRIVEWAYS AT ALL TIMES.

LEGEND

	WORK COMPLETED PREVIOUS PHASE
	WORK AREA
	TYPE III BARRICADE w/ TYPE "A" WARNING LIGHTS R11-2 (LANE)
	DRUMS
	DRUMS w/ W1-8(L)
	CHANNELIZING CONE
	SIGNAGE
	DIRECTION OF TRAVEL



CONTRACTOR SHALL MAINTAIN ACCESS TO ALL BUSINESSES AND DRIVEWAYS

DESIGN	Tt
DRAWN	AKR
CHECKED	TT
APPROVED	DNP
SQUAD	Tt

OKLAHOMA DEPARTMENT OF TRANSPORTATION

TCP-SEQUENCE OF CONSTRUCTION PHASE 3

STATE JOB NO. 17020(05) SHEET NO. 25

CITY PROJECT R-1311A GARFIELD COUNTY

4/21/2017 3:58:27 PM - P:\2771\21\31\2771-2\300\1\CAD\SHSHEETFILES\CONSTR\SEQ-PH3A.DWG - SCHUMACHER, MIKE